

✓(✓)

Перв. примен.

Справ. №

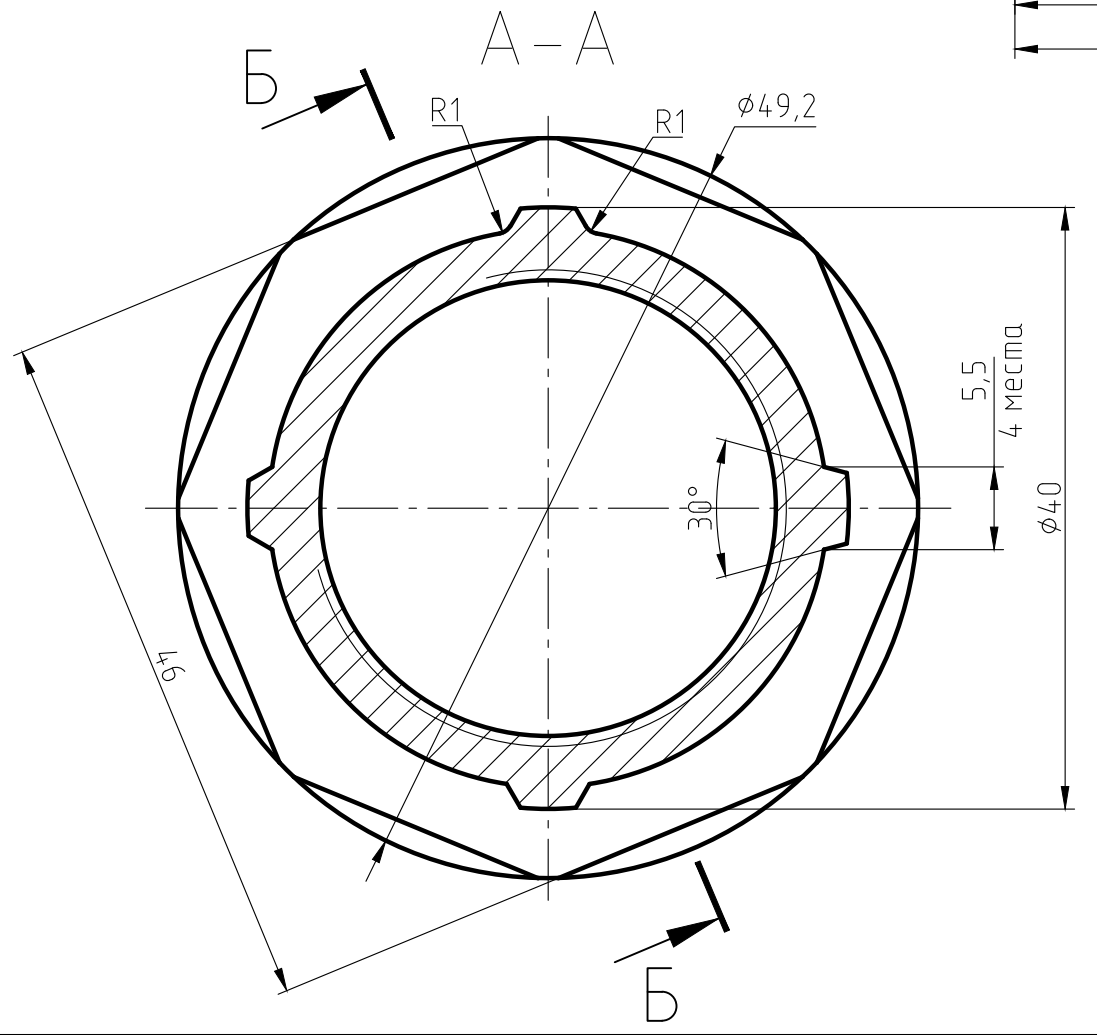
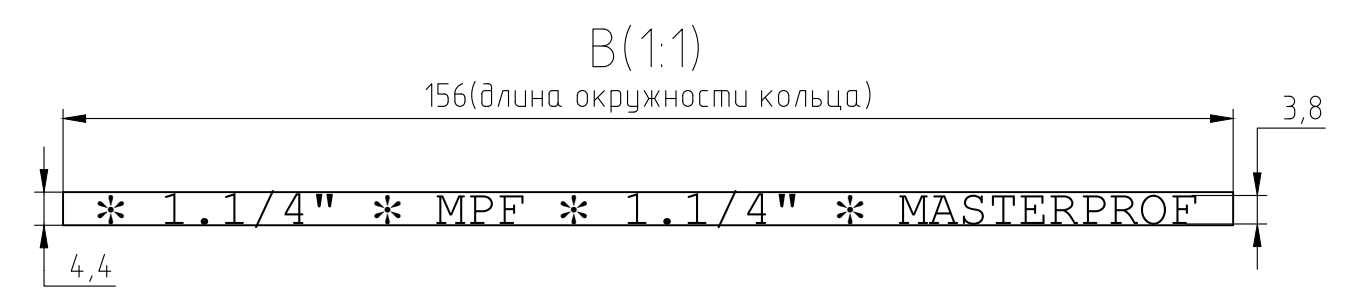
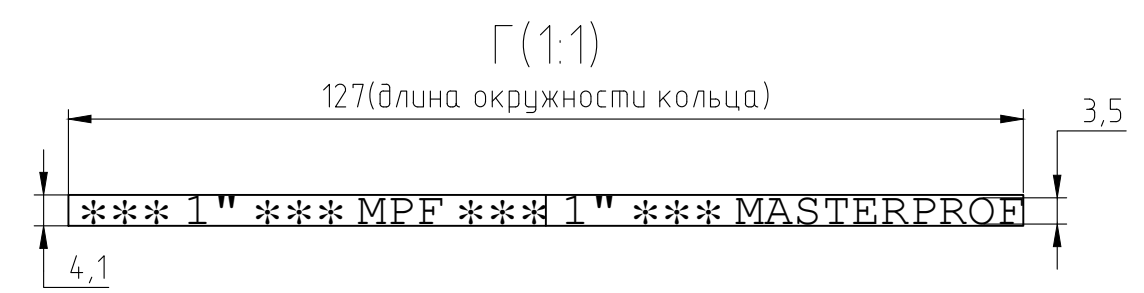
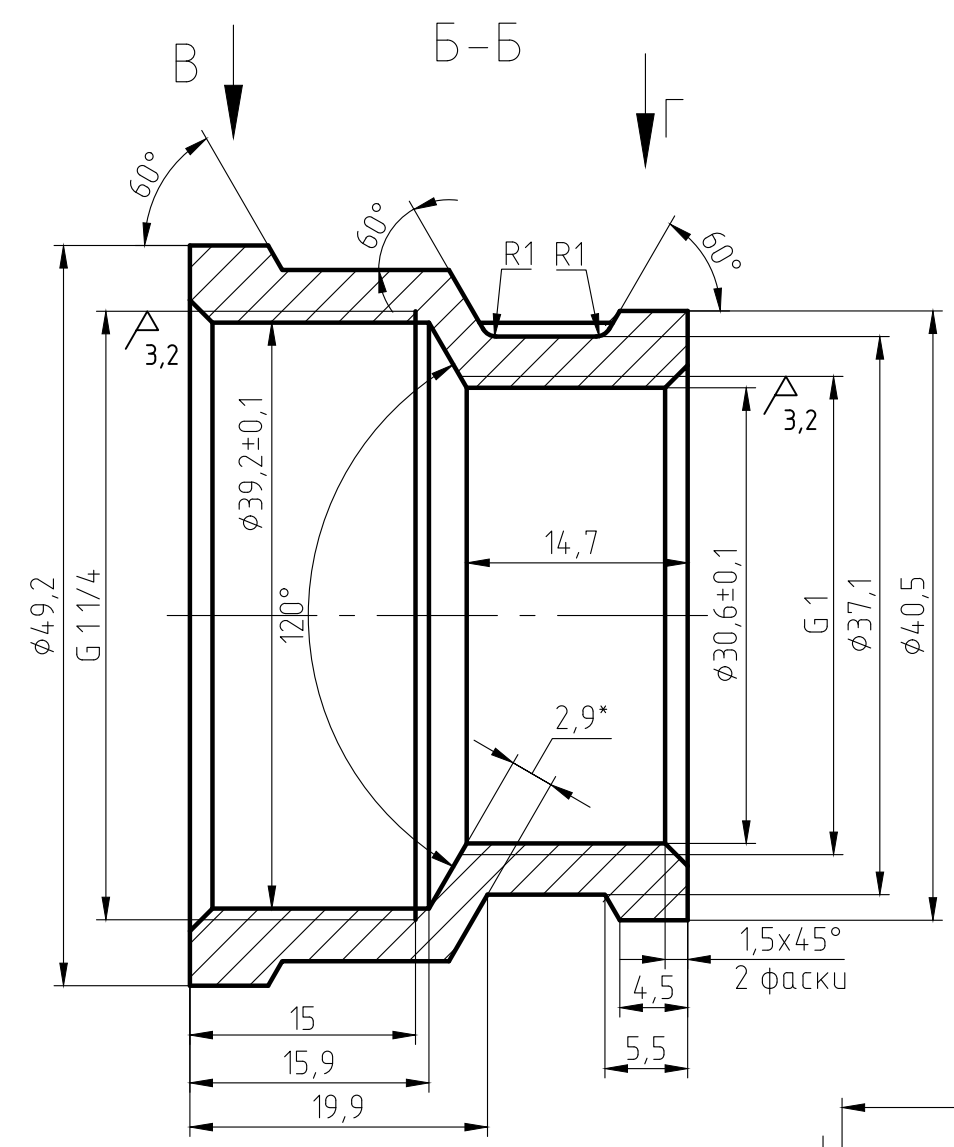
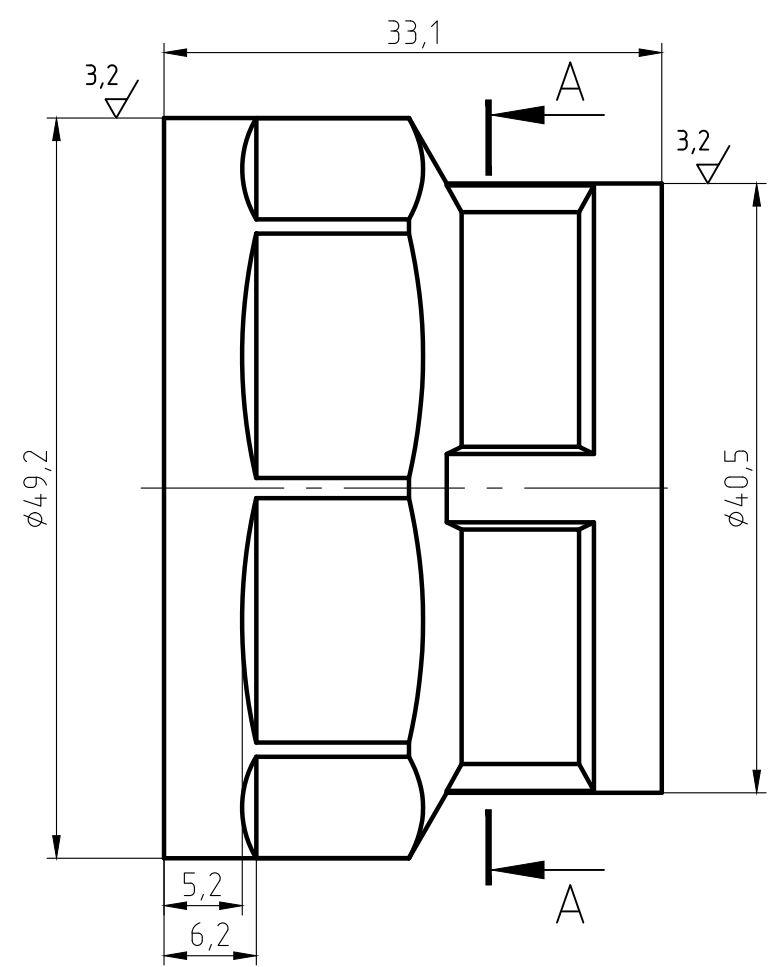
Подп. и дата

Инв. № дубл.

Взам. инв. №

Подп. и дата

Инв. № подл.



1. The parts should be 59-1 materials, no fissuress surface sand-throwing treatment and nickel plating. All nickel plating.
2. Not specified R0.5, slope of 1° .
3. The logo is cave/hollow. depth is 0.3-0.5 mm.
4. Surface is clear and smoothly, deburring C0.2.
5. The dимentions on the drawings are of the finished products.
6. The Male thread should be bitten.

Изм.	Лист	№ докум.	Подп.	Дата	Муфта переходная 1 1/4"x1" ВВ ИС.071996	Лит.	Масса	Масштаб
Разраб.							133,8	2:1
Пров.						Лист	Листов 1	
Т.контр.								
Н.контр.						ЛС 59-1 ГОСТ 15527-2004		
Утв.								